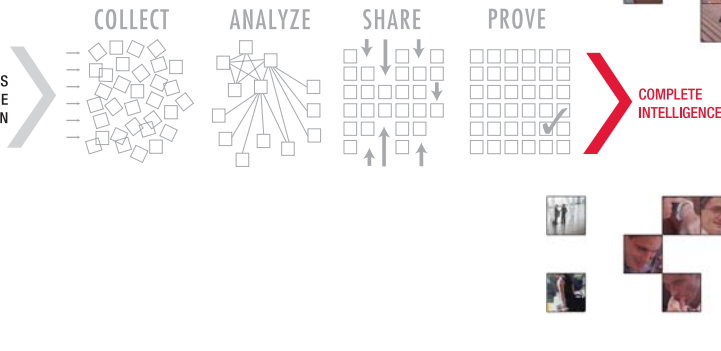


THOUSANDS OF PIECES  
OF INVESTIGATIVE  
INFORMATION



## XANALYS Link Explorer for HOLMES2 — Advanced analysis and reporting of your HOLMES data.

### At a Glance

- Powerful ad hoc querying delivered straight to the analyst's desktop.
- Interrogate HOLMES data with your questions as naturally as any other witness or suspect!
- Generate actionable evidence and avoid
  - Cut & paste chart manipulation.
  - Double-entry presentation.
  - Limited and complicated time consuming queries.
- Out-of-the-box affordable solution that is operationally proven by seasoned HOLMES2 analysts.
- Secure interface ensures HOLMES2 standard logon protocol is maintained.
- Data integrity is assured through read-only mode.
- Off-line capability enables phone call data integration.

XANALYS Link Explorer for HOLMES2 has been designed in collaboration with investigators who have extensive management experience of HOLMES. This experience has enabled XANALYS to provide a solution that ensures your Major Incident Room team can be productive from day one. Numerous standard queries assist you to answer your most common questions, and additionally you can construct your own queries depending on the focus of your investigation.

XANALYS Link Explorer for HOLMES2 has a unique and user friendly Query Editor that enables investigators or analysts to ask questions and retrieve relevant information directly from their HOLMES data. Data is presented in easy-to-read link analysis charts that quickly reveal critical connections that you may have otherwise missed.

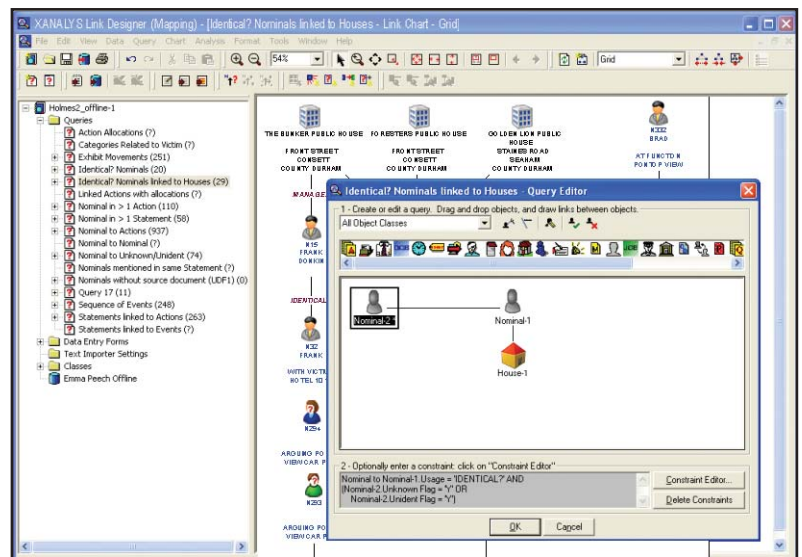
Results can be displayed in many other formats, including as a report, as a timeline with events organized in chronological order, or as a hierarchy chart showing relationships between people.

Multiple views can be on screen simultaneously. And when you make a change in one view, that change is automatically made to the other views.

No technical background is required, leaving operational experience and intuition to be applied unhindered to deliver information about what you want to know — not what you can get.

Your standard queries operate in a few seconds and include:

- **Action Allocations** — which officers have been allocated which actions, including their status.
- **Categories Related to Victim** — the categories that have been created and linked to the victim for further exploration.



*XANALYS Link Explorer for HOLMES2 provides powerful ad hoc querying delivered straight to the analyst's desktop.*

- **Exhibit Movements** — the movements of exhibits, including time stamp information and personnel involved.
- **Identical Nominals** — nominals that may be identical in HOLMES data according to standard protocols.
- **Identical Nominals linked to Houses** — a variation of Identical Nominals above that displays further information about houses they have links to.
- **Linked Actions with Allocations** — linked actions and the officers they have been allocated.
- **Nominals with more than one Action** — nominals linked to all the actions they are subject of.
- **Nominals mentioned in more than one Statement** — nominals linked to all the statements they are mentioned in.

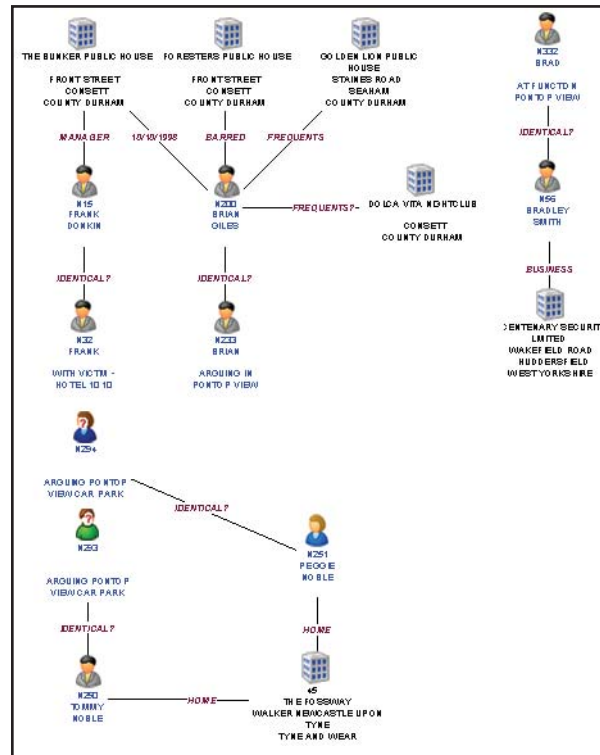
**X**analis®

Let nothing escape you.

[www.xanalis.com](http://www.xanalis.com)

**XANALYS investigative software solutions:**

- XANALYS PowerCase®
- XANALYS Link Explorer
- XANALYS Indexer



Example chart showing identical nominals that are linked to houses.

- **Nominals to Actions** — nominals linked to actions for further exploration.
- **Nominal to Nominal** — links between nominals.
- **Nominal to Unknown Ident** — known nominals linked to unidentified nominals.
- **Nominals mentioned in same Statement** — nominals linked to statements where they are mentioned together.
- **Nominals without Source Document (UDFI)** — nominals that require provenance.
- **Sequence of Events** — all the events according to theme in a SOE chart.
- **Statements linked to Actions** — all statements linked to actions they have originated, generated or resulted.
- **Statements linked to Events** — all statements in a time line of date stamped information.

XANALYS Link Explorer for HOLMES2 provides the capability for exhaustive analysis of your HOLMES data. It is visual, it is dynamic, and integrity is assured. XANALYS Link Explorer for HOLMES2 is the most powerful, comprehensive and affordable solution available that no well-trained investigation team should be without.

Xanalys Limited  
 Market Court  
 20-24 Church Street  
 Altrincham, Cheshire  
 WA14 4DW  
 United Kingdom  
 Ph: +44 (0) 161 941 7792  
 Fx: +44 (0) 161 332 8285

[www.xanalys.com](http://www.xanalys.com)

© 2009. Xanalys Limited. All rights reserved. Xanalys, the Xanalys logo, PowerCase, Watson and Quenza are registered trademarks of Xanalys Ltd. PowerDetector and Triggering are trademarks of Xanalys Ltd. All other trademarks are the property of their respective owner. Policies and specifications subject to change without notice.